

FORMDEX UNIFLEX TYPE-R

CEMENTITIOUS WATERPROOFING MEMBRANE

ASIA'S LEADING
BUILDING PROTECTION
SPECIALIST





ASIA'S LEADING
BUILDING PROTECTION
SPECIALIST

FORMDEX UNIFLEX TYPE-R

HIGH FLEXIBLE ROOT-RESISTANT CEMENTITIOUS
WATERPROOFING MEMBRANE



FORMDEX UNIFLEX TYPE-R IS A TWO COMPONENT CEMENTITIOUS WATERPROOFING SYSTEM MEMBRANE THAT OFFERS AN EFFECTIVE AND PERMANENT WATERPROOFING SOLUTION TO CONCRETE STRUCTURES. FORMDEX IS 100% COMPATIBLE WITH ALL MASONRY STRUCTURES.



TIMMAC JTC - SINGAPORE

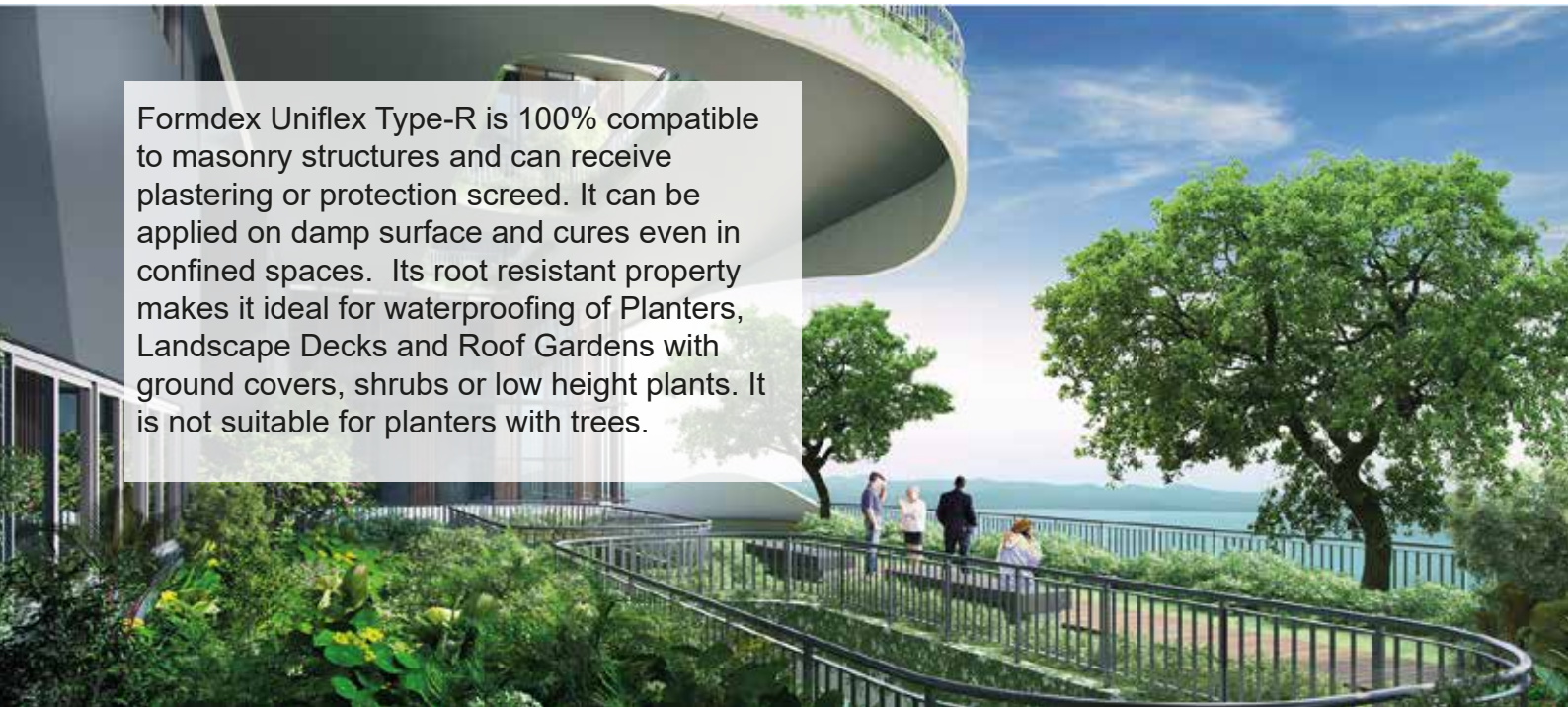
PRODUCT DESCRIPTION

Formdex Uniflex Type-R is a specially formulated 2-component flexible cementitious waterproofing membrane with root resistant property. It is a water-based liquid applied waterproofing membrane that cures to form a permanently flexible yet tough and durable physical film. It waterproofs the surface when applied and can withstand high hydrostatic pressure. Its special root resistant property prevent plants roots from damaging the membrane.

Due to its excellent adhesion, high flexural and tensile strength, it can be applied to both horizontal and vertical surfaces. It is efflorescence free and can be used against active or passive water pressure.

FORMDEX UNIFLEX TYPE-R

Formdex Uniflex Type-R is 100% compatible to masonry structures and can receive plastering or protection screed. It can be applied on damp surface and cures even in confined spaces. Its root resistant property makes it ideal for waterproofing of Planters, Landscape Decks and Roof Gardens with ground covers, shrubs or low height plants. It is not suitable for planters with trees.



COMES IN 2 PARTS

Component A

Powder form - consists of Ordinary Portland Cement, graded quartz sand and inorganic additives.

Component B

Liquid form - is the polymeric binder, which is essentially a modified styrene acrylic co-polymer that gives the product its excellent resistance against water and alkali.



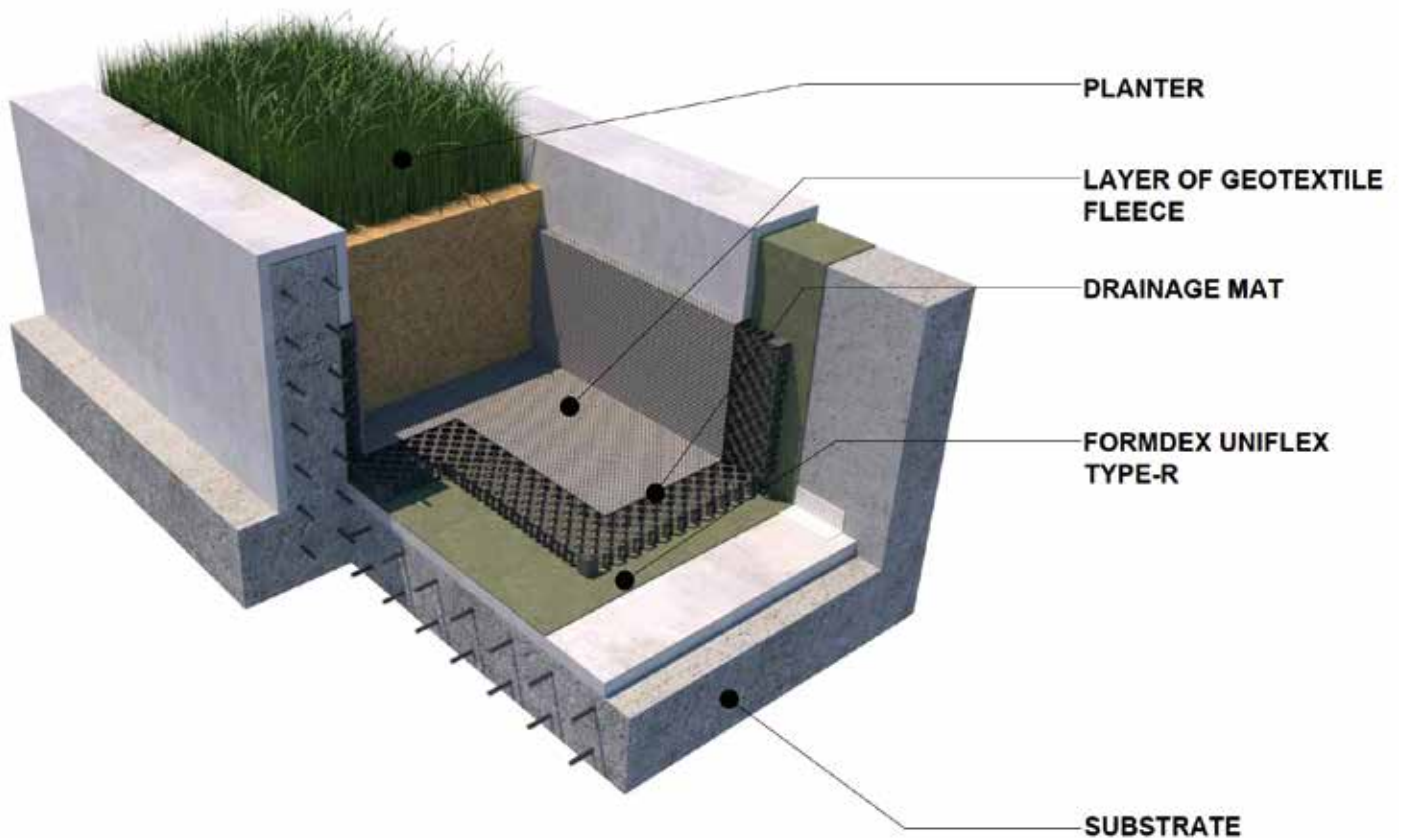
WARRANTY INFORMATION

Only Hitchins' trained applicators are approved to undertake all application work. Hitchins products carry a long-term warranty for both materials and workmanship. The warranty is further backed by Hitchins International Fidelity Fund. Please check with our local applicators if this fund is available in your country. For complete warranty and other related information, please contact Hitchins regional offices.

PRODUCT SPECIFICATION

ELONGATION AT BREAK(ASTM D412): $\geq 150\%$
TENSILE STRENGTH (ASTM D412): $\geq 1.7 \text{ N/mm}^2$
ROOT RESISTANCE (DIN 4062 / PD CEN/TS 14416)): Yes
ADHESION TO SUBSTRATE (ASTM D4541): $\geq 1.5 \text{ N/mm}^2$
CRACK BRIDGING (ASTM C836): Passed 2mm
RESISTANCE TO WATER PENETRATION: No penetration @ 3.0 kgf/cm^2
WATER TOXICITY (SS 375: 2001): Passed

PLANTER BOX



Revision A

All data given and statements and recommendations made herein are base upon our research and experience and are believed to be accurate. However, no guarantee of their accuracy is made or applied. This data specification supersedes all other issues.

FEATURES

Root Resistance

Engineered to resist root penetration, making it ideal for green roof and landscape areas.

Wide Compatibility

May be applied on brickwood, concrete, stone and similar substrate.

Excellent adhesion

Is 100% compatible to masonry substrate, has excellent adhesion to the substrate it is applied on.

Flexibility

Formdex Uniflex has a high flexibility and can bridge cracks up to 2mm width.

Easy Application

Applied using roller and brush. Can be applied on vertical and horizontal surface and on damp substrate.

Dries in humid conditions

Dries well in humid conditions. Can be applied in enclosed or poorly ventilated conditioning.

APPLICATION & INSTALLATION



1. Corners reinforced with fiberglass



2. Membrane applied to pipe



3. Termination at 300mm height



4. Membrane applied with roller



5. Membrane applied in 2 coats



6. Checking of wet Film thickness

APPLICATION

Make sure the substrate is clean and remove dust, dirt and loose particles. The surface to be treated shall be pre-wetted down using clean water and there should be no puddles of water when applying Formdex Uniflex Type-R

- Priming is not required.
- Mixing : Material must be thoroughly mixed in the ratio of 1.5kg of powder to 1kg of liquid (by weight) adding powder to liquid and thoroughly mixed at low speed with a mechanical mixer. Mixed material has a pot life of 60 minutes.
- Before application, pre-water the surfaces to which the coating shall be applied. Substrate should be damp not wet.
- Apply Formdex Uniflex Type-R by brush or roller.
- Apply Formdex Uniflex Type-R at 1.0 kg/m² per coat in either 2 or 3 coats (as specified) to the entire floor and turn up every perimeter wall to a minimum height of 300mm from the finished floor level or as specified in the architect drawings.
- Allow 3 hours drying time between coats.

PONDING & PROTECTION

Ponding test can be carried out 24 hours after application. Back-filling, screeding, tiling etc. can normally be carried out carefully 24 hours after application of the final coat.

Water-retaining structures can only be filled with water after three days of curing.

HEALTH & SAFETY

Read the product label and Material Safety Data Sheet (SDS) before use. Users should acquaint themselves with all risk and safety phrases.

Hitchins (FE) Marketing Pte Ltd
Telephone: (65) 6861 1177
Facsimile: (65) 6863 4240
Email: hitchins@hitchins.com

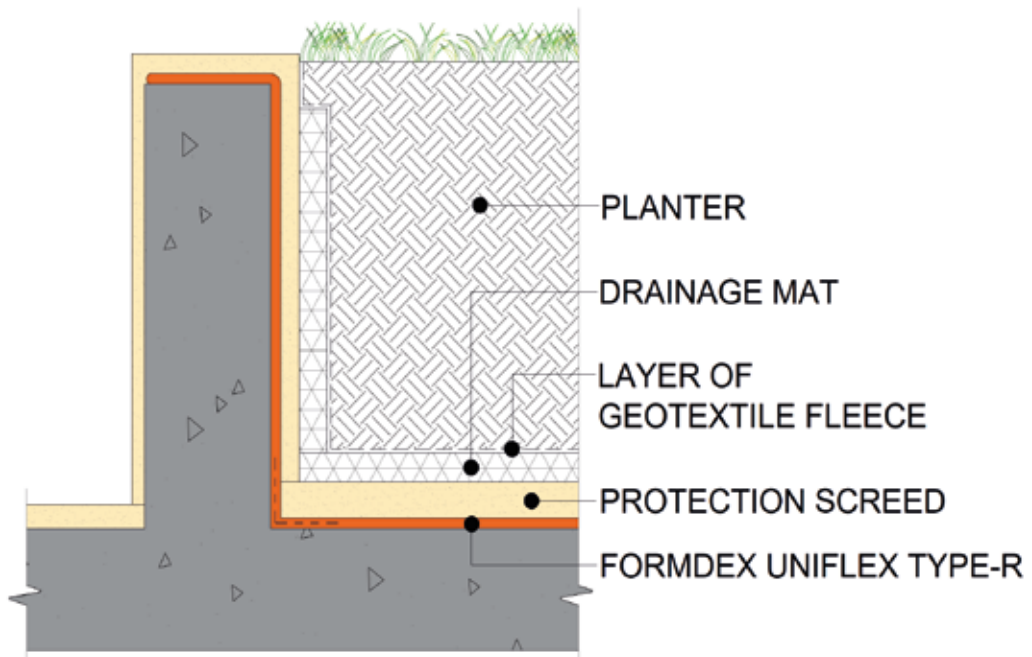
Place Product
Sample Here

Revision A

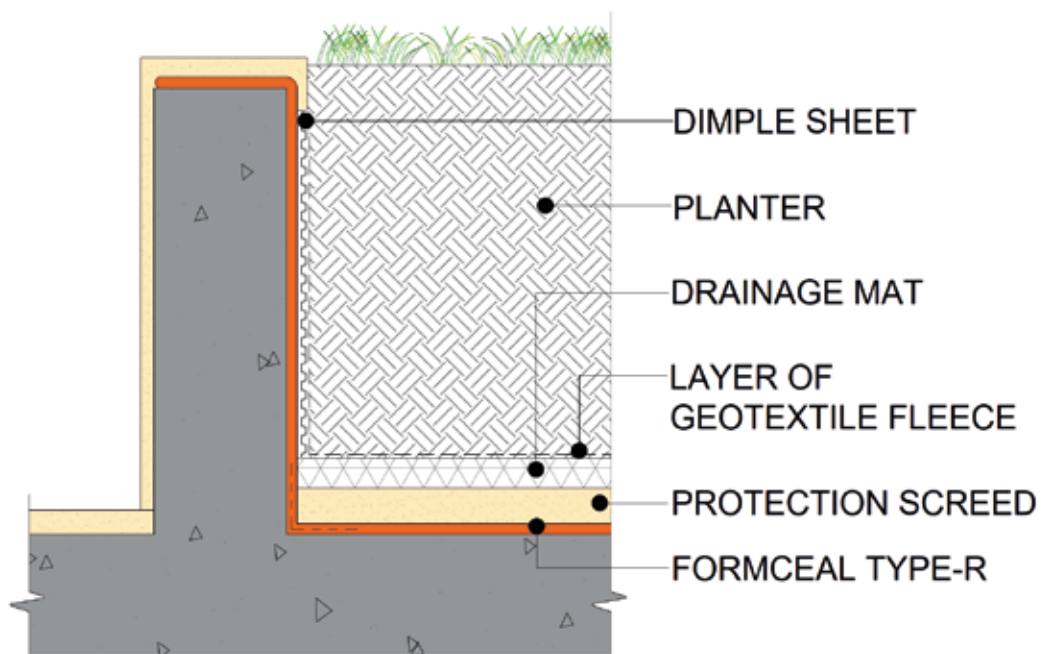
All data given and statements and recommendations made herein are base upon our research and experience and are believed to be accurate. However, no guarantee of their accuracy is made or applied. This data specification supersedes all other issues.

DIAGRAM OVERVIEW

PLANTER BOX



PLANTER BOX



MAJOR PROJECTS



FOREST WOOD CONDOMINIUM - SINGAPORE



CLAVON RESIDENCE SINGAPORE



KALLANG POLYCLINIC - SINGAPORE



TAMPINES NURSING HOME



URBAN TREASURE CONDOMINIUM



RENDEZVOUS HOTEL- SINGAPORE



ULU PANDAN COMMUNITY CLUB - SINGAPORE



KALLANG TENNIS CENTRE - SINGAPORE



KOPAR CONDOMINIUM - SAINGAPORE



PEARL BANK AT OUTRAM PARK SINGAPORE



ST MARGARET PRIMARY SCHOOL SINGAPORE



MANDAI BIRD PARK SINGAPORE

Revision A

All data given and statements and recommendations made herein are base upon our research and experience and are believed to be accurate. However, no guarantee of their accuracy is made or applied. This data specification supersedes all other issues.