

**FORMAK 629 &
FORMAK 629 (SELF-PRIMING)**
CONCEALED WATERPROOFING SYSTEM

ASIA'S LEADING
BUILDING PROTECTION
SPECIALIST



FORMAK 629 & FORMAK 629 (SELF-PRIMING) CONCEALED WATERPROOFING SYSTEM

BOTH FORMAK 629 & FORMAK 629 (SELF-PRIMING) ARE POLYISOPRENE SINGLE COMPONENT, SOLVENT FREE LIQUID APPLIED ELASTOMERIC WATERPROOFING MEMBRANE



SHANGRI-LA RASA SENTOSA RESORT - SINGAPORE

SPECIAL FEATURES

Single Component

May be applied directly from the container without the need for on-site mixing with other components.

Seamless

Easily applied using a brush or roller eliminates potential failure due to poor joints, Ideal for areas that requires a lot of detailing work.

Flexibility and Strength

High elongation and tensile strength to withstand movement within the substrate and high stress areas.

Bitumen and Coal-Tar Free

Will not stain marbles, ceramic tiles and pavers.

Water Based

Can be applied on damp substrate.

Vapour Permeability

Formak 629 is vapour permeable, thus permitting trapped moisture vapour to escape.

Formak 629 contains no bitumen or coal tar and will not cause staining to marble, tiles or tiles grout.

Once cured, it forms a continuous membrane with more than 800% elongation and high tensile strength.

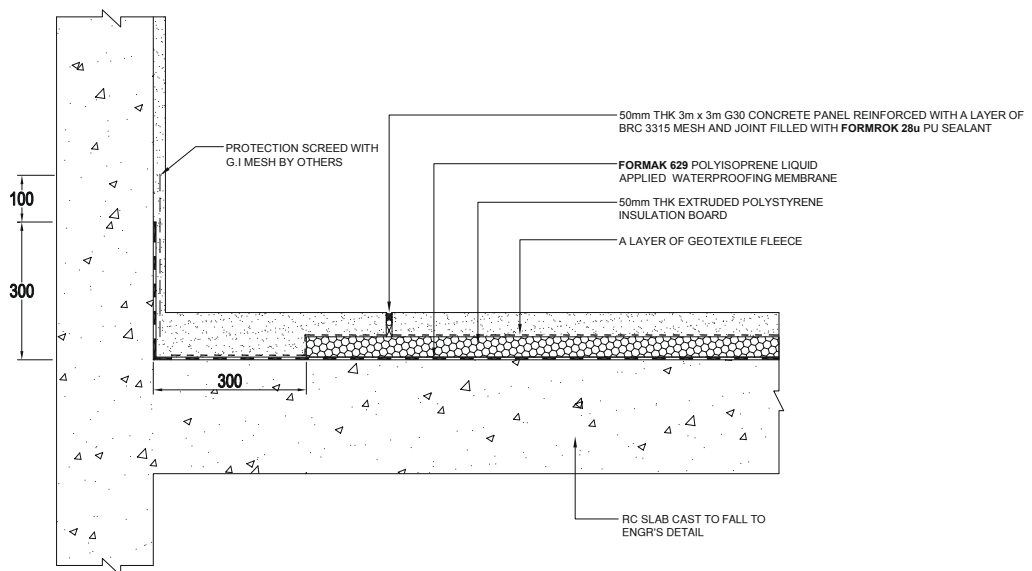
It is suitable for used as concealed waterproofing membrane at areas subjected to thermal stress.

AREAS OF USAGE

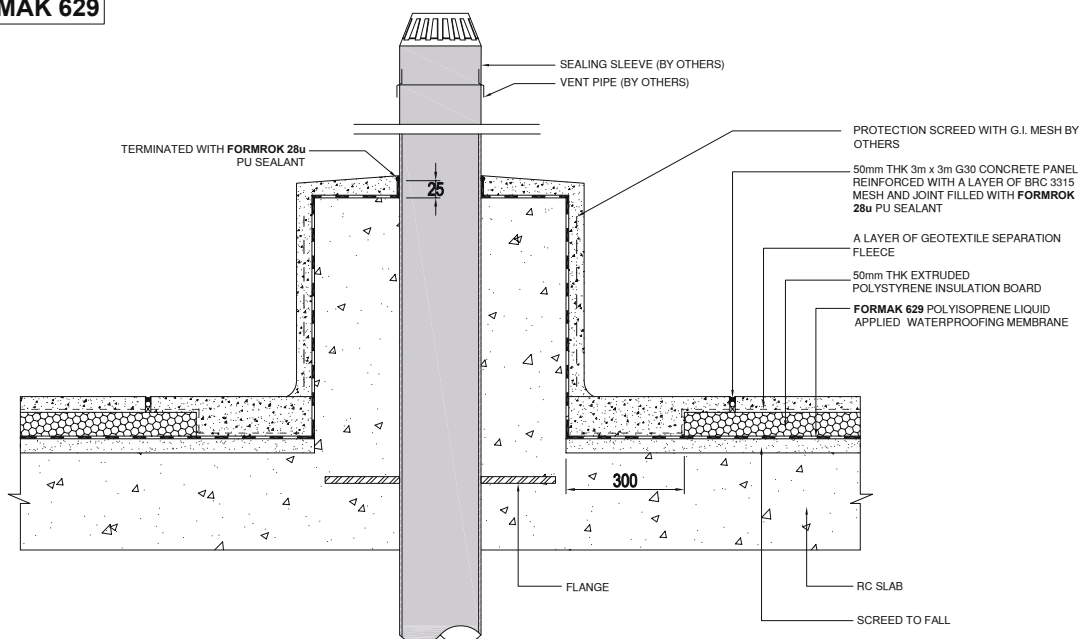
- Roof
- Gutters
- Decks and Patios
- Driveways
- Wet Areas

DIAGRAM OVERVIEW

FORMAK 629



FORMAK 629



WARRANTY INFORMATION

Only Hitchins' trained applicators are approved to undertake all application work. Hitchins products carry a long-term warranty for both materials and workmanship. The warranty is further backed by Hitchins International Fidelity Fund. Please check with our local applicators if this fund is available in your country. For complete warranty and other related information, please contact Hitchins regional offices.



ASIA'S LEADING
BUILDING PROTECTION
SPECIALIST

FORMAK 629

CONCEALED WATERPROOFING SYSTEM

DATA SPECIFICATION SHEET



032 002
Environmentally Friendly Coating



DESCRIPTION

Formak 629 is a polyisoprene single component, liquid applied, elastomeric waterproofing membrane based on highly elastic organic polymers. Formak 629 contains no bitumen or coal tar and will not cause staining to marble, ceramic tiles or tile grouts. It has more than 800% elongation, is non-flammable and non-toxic. Formak 629 can be reinforced with fiberglass mat for extra strength in areas where high stress may be encountered such as around pipes and up stands. The membrane is seamless and therefore eliminates potential failure due to poor joints.

DATA SPECIFICATION

Formak 629 should be used as an effective membrane to waterproof ground slabs, walkways and concealed roofing applications. As a liquid applied system, it is ideal for areas that require a lot of detailing work.

PRODUCT SPECIFICATION

COLOUR: Grey
PACKING SIZE: 20 litre pail
SHELF LIFE: 2 years in an unopened container
SOLIDS (by volume): 59%
THINNING: As Formak 629 is based on polyisoprene it can not be thinned with water.
DRYING TIMES: 1-2 hours for roofing applications
DRY FILM THICKNESS: approximately 1.0 mm.
ELONGATION (ASTM D412): 883%
TENSILE STRENGTH (ASTM D412): 4.87 N/mm²
CRACK BRIDGING (ASTM C1522): ≥7mm
TEAR STRENGTH (ASTM D624): 20.53N/mm
MODULUS AT 100% ELONGATION (ASTM D412): 1.18MPA
RECOVERY AT 200% / 300% ELONGATION (ASTM D412): 98.3% / 96.6%
WATER VAPOUR TRANSMISSION (ASTM E96): 105.64 g/m²/24hrs
RESISTANCE TO WATER PRESSURE (DIN 1048: Part 5): No penetration @ 5 bars
ADHESION TO SUBSTRATE (ASTM D4541): 1.81 N/mm²
SHORE A HARDNESS (ASTM D2240): 83.8
EXTENSIBILITY AFTER HEAT AGING AT 23°C / 50% RH (ASTM C1522): No cracks, tears or holes at 7.0mm

SUBSTRATE PREPARATION

Ensure the substrate is clean, dry and free of dirt, loose particles etc. as much as possible

SUBSTRATE APPLICATION

Apply one coat of Formak 629 Primer at 8 - 10 m²/litre and allow to dry for 2 hours before overcoating.

** Primer not required for Formak 629 Self-Priming grade*

TREATMENT TO DETAILING

Apply Formak 629 at 1.0 litre/m² making certain to dress up at least 300mm from the finished floor. Immediately roll in a layer fibreglass mat and apply another coat of Formak 629 at 0.5 litre/m².

** Internal corners Fibreglass mat is not required if there is a 25mm x 25mm angle fillet.*

ROOF APPLICATION

Apply Formak 629 by roller or brush at 0.6 litre/m² and leave to dry for at least 4 hours before application of the 2nd coat at 0.6 litre/m².

Ponding test can be carried out 24 hours after application of finishing coat.

HEALTH & SAFETY

Formak 629 contains ammonia, when used indoors, provision should be made to ensure that adequate ventilation is provided. In cases where ventilation is not adequate, operators should wear safety masks suitable for use with ammonia.

Dry paint can be removed from the skin by using warm water and soap.

Place Product
Sample Here

Hitchins (FE) Marketing Pte Ltd
Telephone: (65) 6861 1177
Facsimile: (65) 6863 4240
Email: hitchins@hitchins.com

Revision D

All data given and statements and recommendations made herein are base upon our research and experience and are believed to be accurate. However, no guarantee of their accuracy is made or applied. This data specification supersedes all other issues.

MAJOR PROJECTS



Audi Centre - Singapore



One @ Changi City - Singapore



The Star Vista - Singapore



De La Salle University Library - Philippines



Grameen Phone Head Office - Bangladesh



Empress City Mall, Nagpur, India



Preanger Hotel - Indonesia



G-Residences Condominium - Kuala Lumpur



Supreme Business Park, India

APPLICATION & INSTALLATION



1. Application of Primer Coat



2. Treatment to Details - 1st Coat of 629



3. Unroll 100mm width Fibreglass Mat



4. Apply 1 Coat of Formak 629 over Fibreglass



5. Application of 1st Formak Topcoat



6. Application of final Formak 629 Topcoat