

**NURAPRUF 415 &  
NURAPRUF 415 (SELF-ADHESIVE)**  
HIGH PERFORMANCE HDPE PRE-APPLIED & POST-  
APPLIED WATERPROOFING MEMBRANE

**ASIA'S** LEADING  
BUILDING PROTECTION  
SPECIALIST



# NURAPRUFÉ 415 & NURAPRUFÉ 415 (SELF-ADHESIVE)

HIGH PERFORMANCE HDPE PRE-APPLIED & POST-APPLIED WATERPROOFING MEMBRANE

NURAPRUFÉ 415 MEMBRANE IS UNIQUE AS IT IS MADE UP OF COMPOSITE SHEETS COMPRISING OF THICK HDPE FILM, AN AGGRESSIVE PRESSURE SENSITIVE ADHESIVE AND A WEATHER RESISTANT PROTECTIVE COATING.



MANDAI BIRD PARK - SINGAPORE

## PRODUCT DESCRIPTION

Nuraprufe 415 membranes are applied horizontally to prepared lean concrete or well rolled and compacted sand or crushed stone blinding.

Vertically the membrane is fastened to permanent formwork or adjoining structures.

Concrete is then cast directly against the adhesive side of the membranes. The specially developed pressure sensitive adhesives work to bond the membrane to concrete face.

### The Nuraprufe System includes:

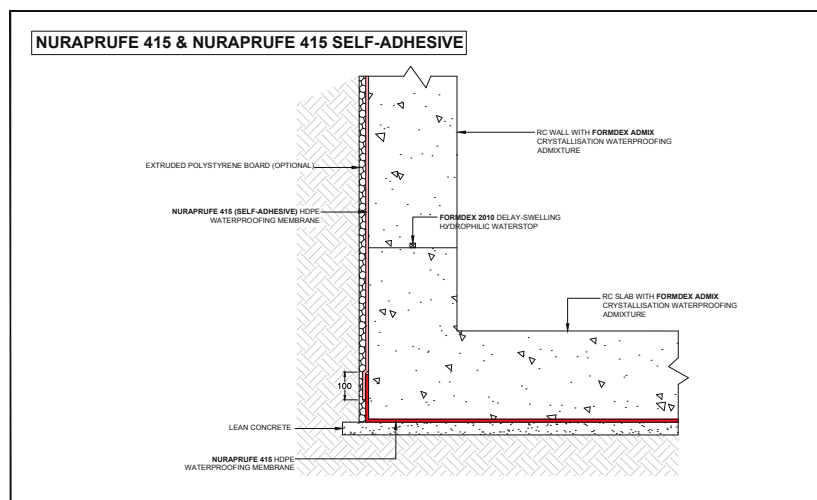
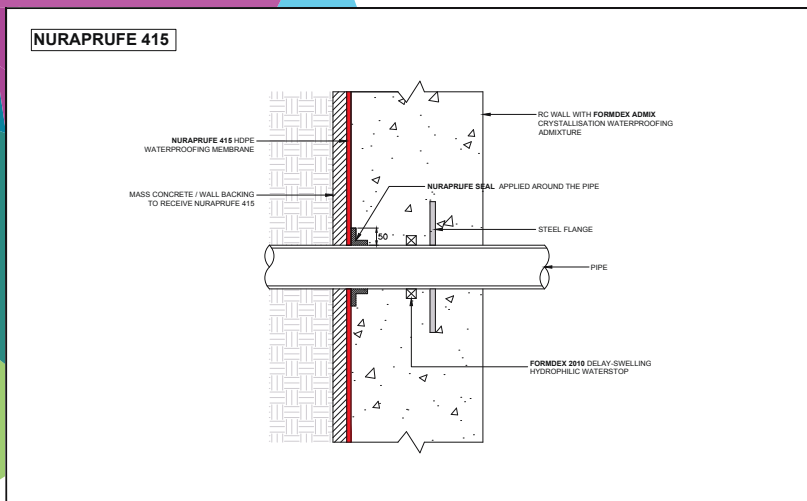
- Nuraprufe 415: A high performance HDPE membrane
- Nuraprufe 415 (Self-Adhesive): A self-adhesive high performance HDPE membrane for external wall post-applied application
- Nuraprufe Tape for lapping between two rolls of membrane
- Nuraprufe SS Tape for sealing of fastening points and punctures
- Nuraprufe Seal: Thick black bituminous mastic compound for terminations.

Nuraprufe 415 is a pre-applied fully bonded waterproofing membrane that bonds directly to concrete poured against it. This continuous and unique integral bond to concrete prevents lateral water migration around the structure and makes it unaffected by ground settlement beneath the slab.

## AREAS OF USAGE

- Basement structures
- Tunnels
- Ground slabs

# DIAGRAM OVERVIEW



## SPECIAL FEATURES

### Continuous bond to concrete

Membrane forms an integral seal with concrete thus preventing lateral water migration

### High Performance

HDPE layer provides high puncture resistance

### Membrane is self-protecting

It is trafficable and ready for immediate placement of reinforcement

### Fully adhered water-tight laps and detailing

### Weather and UV resistant

### Unaffected by wet conditions

Cannot be activated prematurely

### Can be fixed to permanent formworks

Allows max use of confined space

### Simple and quick to install

Does not require primer or fillets

### Physical barrier

Isolate structure against water, moisture and gas

### Effective in all types of waters and soils

#### WARRANTY INFORMATION

Only Hitchins' trained applicators are approved to undertake all application work. Hitchins products carry a long-term warranty for both materials and workmanship. The warranty is further backed by Hitchins International Fidelity Fund. Please check with our local applicators if this fund is available in your country. For complete warranty and other related information, please contact Hitchins regional offices.



ASIA'S LEADING  
BUILDING PROTECTION  
SPECIALIST

# NURAPRUF 415

HIGH PERFORMANCE HDPE PRE-APPLIED WATERPROOFING  
MEMBRANE THAT BONDS INTERGRALLY TO POURED CONCRETE



## DATA SPECIFICATION SHEET

### DESCRIPTION

Nuraprufe 415 membrane is unique as it is made up of composite sheets comprising a thick HDPE film, an aggressive pressure sensitive adhesive and a weather resistant protective coating. It is a pre-applied fully bonded waterproofing membrane that bonds directly to concrete poured against it thus sealing the concrete preventing any ingress or lateral migration of water around the structure.

### AREAS OF USAGE

Nuraprufe 415 is ideally suited for used to waterproof basement structures, tunnels, subways etc.

### ADVANTAGES

- Thick HDPE provides high dimensional stability, puncture and tear resistance
- Unique pressure sensitive adhesive technology ensuring continuous seal
- Forms a unique integral seal to concrete poured against it thus preventing lateral water migration
- The membrane once bonded to concrete is unaffected by ground settlement beneath slabs
- The membrane is self protecting – it is trafficable immediately after application and ready for immediate placing of reinforcement
- Unaffected by wet conditions
- Provides a physical barrier and isolate structure to water, moisture and gas
- Effective in all types of waters and soils
- Simple and quick to install
- Highly ideal for confined spaces as it can be applied to permanent formwork
- Weather and UV resistant

### PRODUCT SPECIFICATION

**THICKNESS:**  $\geq 1.2\text{mm}$

**ROLL SIZE:** 1.2m x 30m Length

**TENSILE STRENGTH (SS 374):** 36.59 N/mm<sup>2</sup>

**ELONGATION (SS 374):** 1350%

**TENSILE SHEAR AT JOINT (SS 374):** > 761 N

**RESISTANCE TO HYDROSTATIC PRESSURE (DIN 16726):** 20 Bars

**RESISTANCE TO LEAKAGE AT JOINTS (SS 374):** No leakage

**PUNCTURE RESISTANCE (ASTM E154):** 1144 N

**ADHESION TO CONCRETE (ASTM D903):** 3340 N

**UV ACCELERATED WEATHERING - 1000 HOURS (ASTM G154):** Passed

**LATERAL WATER MIGRATION (ASTM D5385):** There is no water leakage at max pressure  
(100psi/ 70m)

**WATER VAPOUR TRANSMISSION (ASTM E96):** 0g/m<sup>2</sup>/hr

## APPLICATION

### SUBSTRATE PREPARATION

All Surfaces - It is essential to create a sound and solid substrate to eliminate movement during the concrete pour. Substrates must be fairly regular and smooth with no gaps or voids greater than 12mm. Grout around all penetrations such as utility conduits, etc. for stability.

### APPLICATION

Nuraprufe 415 can be applied at temperatures of -4°C or above.

#### Horizontal Substrates

Place the membrane with HDPE film side to the substrate with plastic release liner side facing towards the concrete pour. Leave plastic release liner in position until overlap procedure is completed. Accurately position succeeding sheet to overlap the previous sheet by 80mm along the marked selvedge. Ensure the underside of the succeeding sheet is clean, dry and free from contamination before attempting to overlap. Peel back the plastic release liner between the overlaps and bond the two layers together. Ensure a continuous bond is achieved and press firmly with a heavy hand. Completely remove the plastic liner to expose the protective coating before proceeding with placement of reinforcement bars. Any initial tack will quickly disappear.

#### Vertical Substrates

Mechanically fasten the membrane vertically using fixings (i.e. nails, fasteners) appropriate to the substrate with plastic release liner side facing towards the concrete pour. The membrane may be installed in any convenient length. Top of the membrane can also be secured using a batten such as a termination bar or fixing 50mm below the top edge. Fixings can be made through the selvedge so that the membrane lays flat and allows firmly rolled overlaps. Immediately remove the plastic release liner. Any additional fixings must be covered with a patch of Nuraprufe SS Tape. Ensure the underside of the succeeding sheet is clean, dry and free from contamination before attempting to overlap.

#### Roll Ends and Cut Edges

Overlap all roll ends and cut edges by a minimum 80mm and ensure the area is clean and free from contamination, wiping with a damp cloth if necessary. Use Nuraprufe Tape to ensure continuous bond between 2 rolls.

### EXPOSURE AND PROTECTION

Following the application and inspection, care should be taken to prevent damage by following trades. Any punctured or damaged areas should be cleaned and patched using Nuraprufe 415 with Nuraprufe Tape with minimum 50mm laps all around or with Nuraprufe SS Tape.

## HEALTH & SAFETY

Read the product label and Material Safety Data Sheet (MSDS) before use. Users should acquaint themselves with all risk and safety phrases.

Place Product  
Sample Here

Hitchins (FE) Marketing Pte Ltd  
Telephone: (65) 6861 1177  
Facsimile: (65) 6863 4240  
Email: [hitchins@hitchins.com](mailto:hitchins@hitchins.com)

Revision C - Apr 21

All data given and statements and recommendations made herein are base upon our research and experience and are believed to be accurate. However, no guarantee of their accuracy is made or applied. This data specification supersedes all other issues.

# MAJOR PROJECTS



HDB Sky Residence @ Dawson - Singapore



Digital Loyang II (SIN12) Project Sandman - Singapore



DUO Residences - Singapore



PUB Water Hub - Singapore



JTC 1 North Coast - Singapore



TUV SUD PSB - Singapore



C821A - Kim Chuan MRT Depot - Singapore



T301 - 4 in 1 Mega MRT Depot - Singapore



T310 - Bayshore MRT Station - Singapore

# APPLICATION & INSTALLATION



1. Unroll membrane



2. Overlapping at joint



3. Termination with Nuraprufe Seal



4. Installation at Confined Areas



5. Installation Completed on Slab



6. N415 (Self-Adhesive) on Ext. Wall